

battery type: Lithium - Thionyl - Chloride
battery size: IEC: LR14; JIS: AM-2; ANSI: C; MN1400; Baby
chemical system: Li-SOCl₂

Conditions

nominal voltage: 3.6 V
open circuit voltage: ≥3.65 V new battery

capacity
rated: 9000 mAh all measurements at 20°C ambient
 discharge at 2mA constant current
 End Voltage (EV): 2.0V

minimum: 6000 mAh discharge at 33mA constant current
 End Voltage (EV): 2.0V

2600 mAh discharge at 200mA constant current
 End Voltage (EV): 2.0V

self discharge: <1 % storage at 20°C for 1 year

typical service output (new batteries)

≥ 7500 mAh load resistor: 330ohms; EV: 2.0V

≥ 6500 mAh discharge at 62ohms; EV: 2.0V

≥ 7800 mAh load resistor: 330ohms; EV: 2.0V
 discharge at +55°C

≥ 4800 mAh discharge at 1.2kohms; EV: 2.0V
 discharge at -40°C

internal resistance: ≤ xx Ω at 1kHz, sine wave measurement
 according to IEC 896-2

shelf life: 10 years under proper storage conditions

leakage resistance
over discharge: prohibited

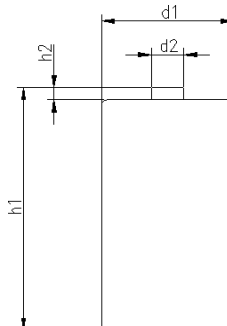
ambient temperature
range: - 55...+85 °C

recommended storage
conditions: -20....40 °C ambient temperature
 45...75 % rel. humidity

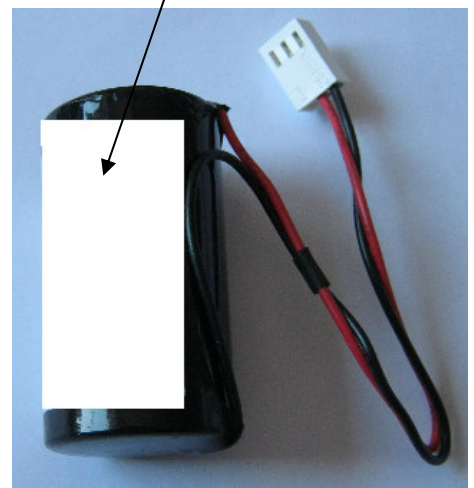
mechanical specifications


cell dimensions
 diameter d1: max. 26.2 mm
 diameter d2: 7.0 mm
 height h1: max. 50.0 mm
 weight: approx. 60 g

plug: Molex 22-01-1032
wires: AWG 24 130 mm



Ansmann Label



	ANSMANN Specifications for model:	Lithium Battery C - size with Molex plug bulk package
	data sheet no. / part no.	2643-3001
	Version no.	
	author / date	RA / 12.04.2011