

battery type: Lithium - Thionyl - Chloride
battery size: IEC: LR20; JIS: AM-1; ANSI: D; MN1300; Mono
chemical system: Li-SOCl₂

nominal voltage: 7.2 V
open circuit voltage: ≥7.3 V

Conditions

new battery

capacity
 rated: 19000 mAh all measurements at 20°C ambient
 discharge at 3mA constant current
 End Voltage (EV): 2.0V
 minimum: 12000 mAh discharge at 60mA constant current
 End Voltage (EV): 2.0V
 4000 mAh discharge at 200mA constant current
 End Voltage (EV): 2.0V
 self discharge: <1 % storage at 20°C for 1 year

typical service output (new batteries)

≥ 13000 mAh load resistor: 200ohms; EV: 2.0V
 ≥ 10000 mAh discharge at 30ohms; EV: 2.0V
 ≥ 13500 mAh load resistor: 200ohms; EV: 2.0V
 discharge at +55°C
 ≥ 6500 mAh discharge at 680ohms; EV: 2.0V
 discharge at -40°C

internal resistance: ≤ xx Ω at 1kHz, sine wave measurement
 according to IEC 896-2

shelf life: 10 years under proper storage conditions

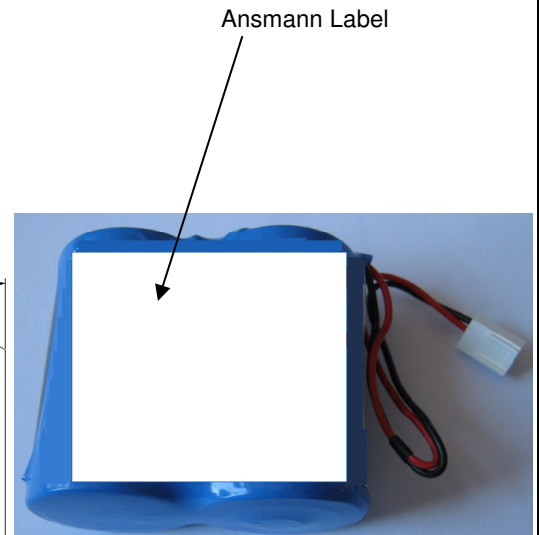
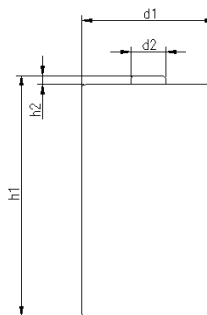
leakage resistance
 over discharge: prohibited

ambient temperature
range: - 55...+85 °C


recommended storage
 conditions: -20....40 °C ambient temperature
 45...75 % rel. humidity

mechanical specifications

cell dimensions
 diameter d1: max. 34.2 mm
 diameter d2: max. 10.0 mm
 height h1: max. 61.5 mm
 weight: approx. 218 g



approvals: UL 1642

	ANSMANN Specifications for model:	Ansmann Lithium Battery D - size 2S1P bulk package
	data sheet no. / part no.	2644-3001
	Version no.	
	author / date	RA / 12.04.2011