

**battery type:** Lithium - Thionyl - Chloride  
**battery size:** IEC: LR14; JIS: AM-2; ANSI: C; MN1400; Baby  
**chemical system:** Li-SOCl<sub>2</sub>

**Conditions**

**nominal voltage:** 7.2 V  
**open circuit voltage:** ≥7.3 V new battery

**capacity**  
 rated: 9000 mAh all measurements at 20 °C ambient  
 discharge at 2mA constant current  
 End Voltage (EV): 2.0V

minimum: 6000 mAh discharge at 33mA constant current  
 End Voltage (EV): 2.0V

2600 mAh discharge at 200mA constant current  
 End Voltage (EV): 2.0V

self discharge: <1 % storage at 20 °C for 1 year

**typical service output (new batteries)**

≥ 7500 mAh load resistor: 330ohms; EV: 2.0V

≥ 6500 mAh discharge at 62ohms; EV: 2.0V

≥ 7800 mAh load resistor: 330ohms; EV: 2.0V  
 discharge at +55 °C

≥ 4800 mAh discharge at 1.2kohms; EV: 2.0V  
 discharge at -40 °C

**internal resistance:** ≤ xx Ω at 1kHz, sine wave measurement  
 according to IEC 896-2

**shelf life:** 10 years under proper storage conditions

**leakage resistance**  
 over discharge: prohibited

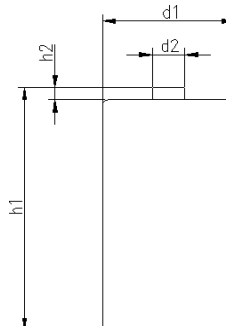
**ambient temperature**  
**range:** - 55...+85 °C


recommended storage  
 conditions: -20....40 °C ambient temperature  
 45...75 % rel. humidity

**mechanical specifications**

cell dimensions  
 diameter d1: max. 26.2 mm  
 diameter d2: 7.0 mm  
 height h1: max. 50.0 mm  
 weight: approx. 115 g

plug: Molex 22-01-1032  
 wires: AWG 24 130 mm



	<b>ANSMANN Specifications for model:</b>	<b>Lithium Battery 2S1P C - size with Molex plug bulk package</b>
	data sheet no. / part no.	2643-3002
	Version no.	
	author / date	RA / 12.04.2011